

# Pressure Relief valves

## Series PCV-1

### General Data

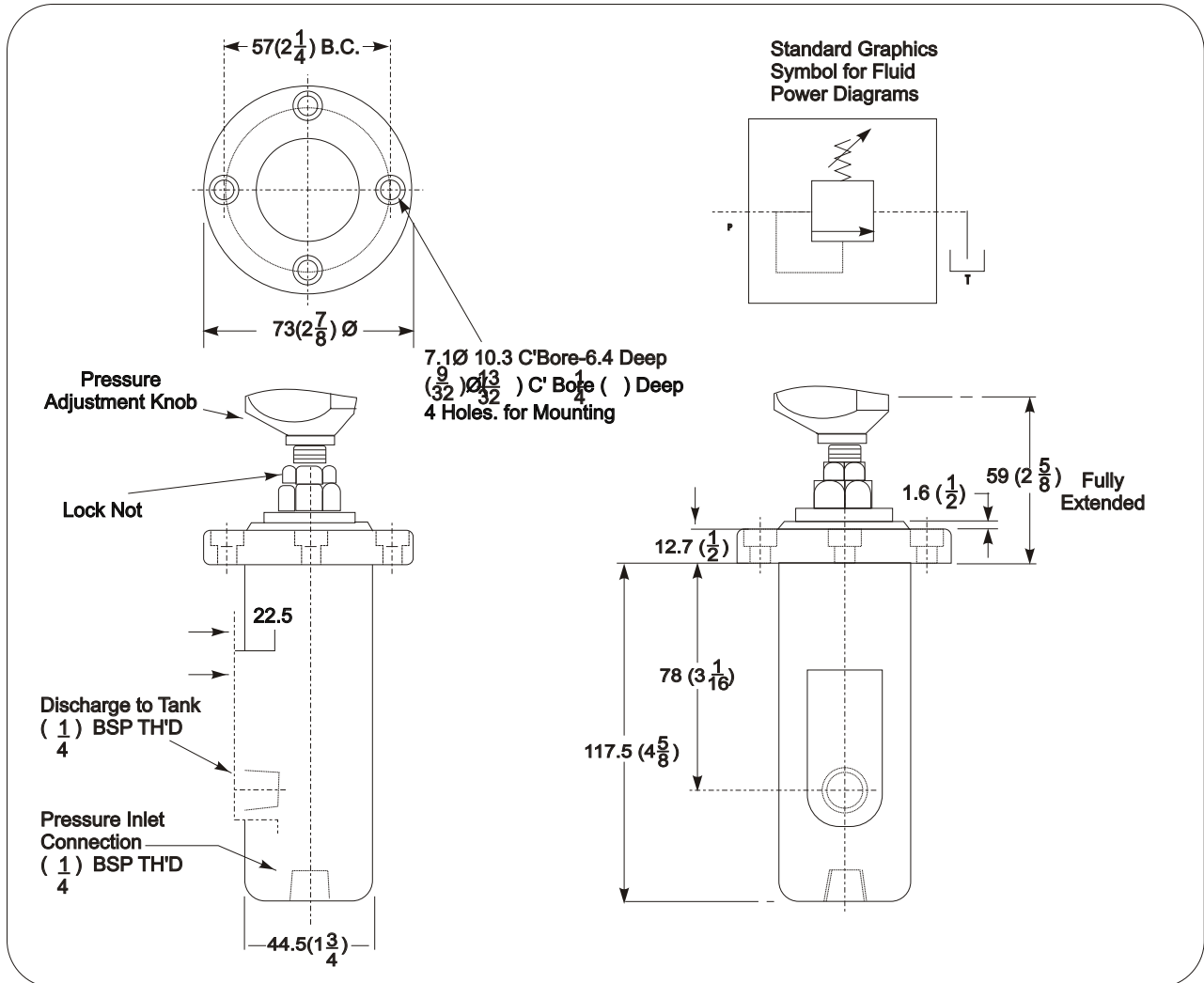
General usage is in applications requiring an adjustable pressure relief valve or pressure regulating valve of small capacity and direct action spring loaded type. Also in application as a remote control valve for pilot operation of Microtact balanced piston type relief valves.

Clockwise rotation increases pressure anti-clockwise rotation decreases pressure.

Maximum Tank Line  
Back Pressure.....100 psi  
Maximum Cap.....11.5 l/min  
Weight (App.).....1.8kg.

### Pressure Adjustment

Adjustment of pressure is accomplished by loosening lock nut and turning adjustment control knob.



## 1. PRESSURE RELIEF VALVE

PCV - 1 - \*\*\*\*/\*\*\*\*  
1      2      3

1 - Model No. (PCV)
2 - Model Series (1)
3 - Pressure Range
a) 75 psi to 1000 psi - YD
b) 500 psi to 2000 psi - DC
c) 1500 psi to 3000 psi - RD